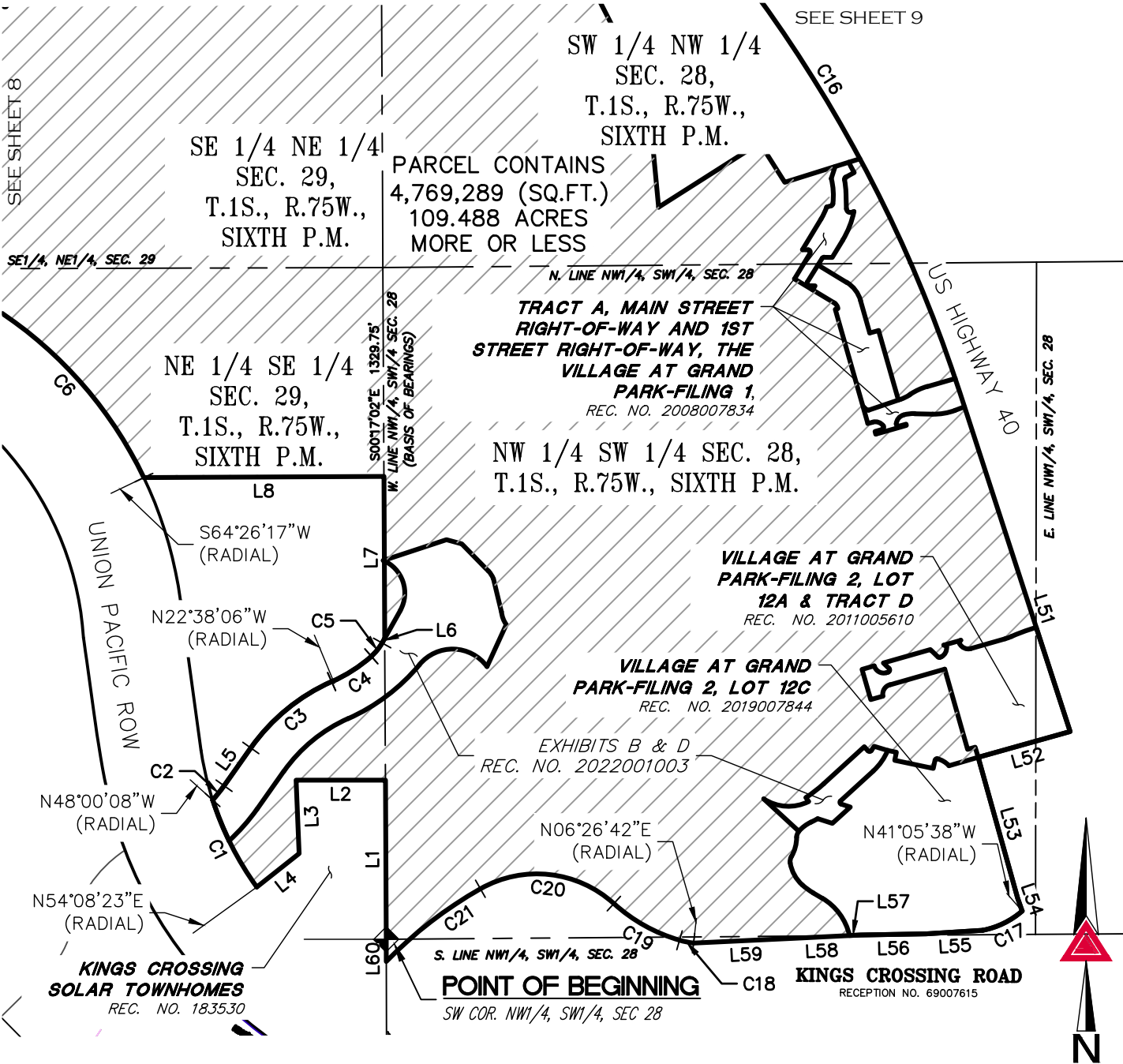
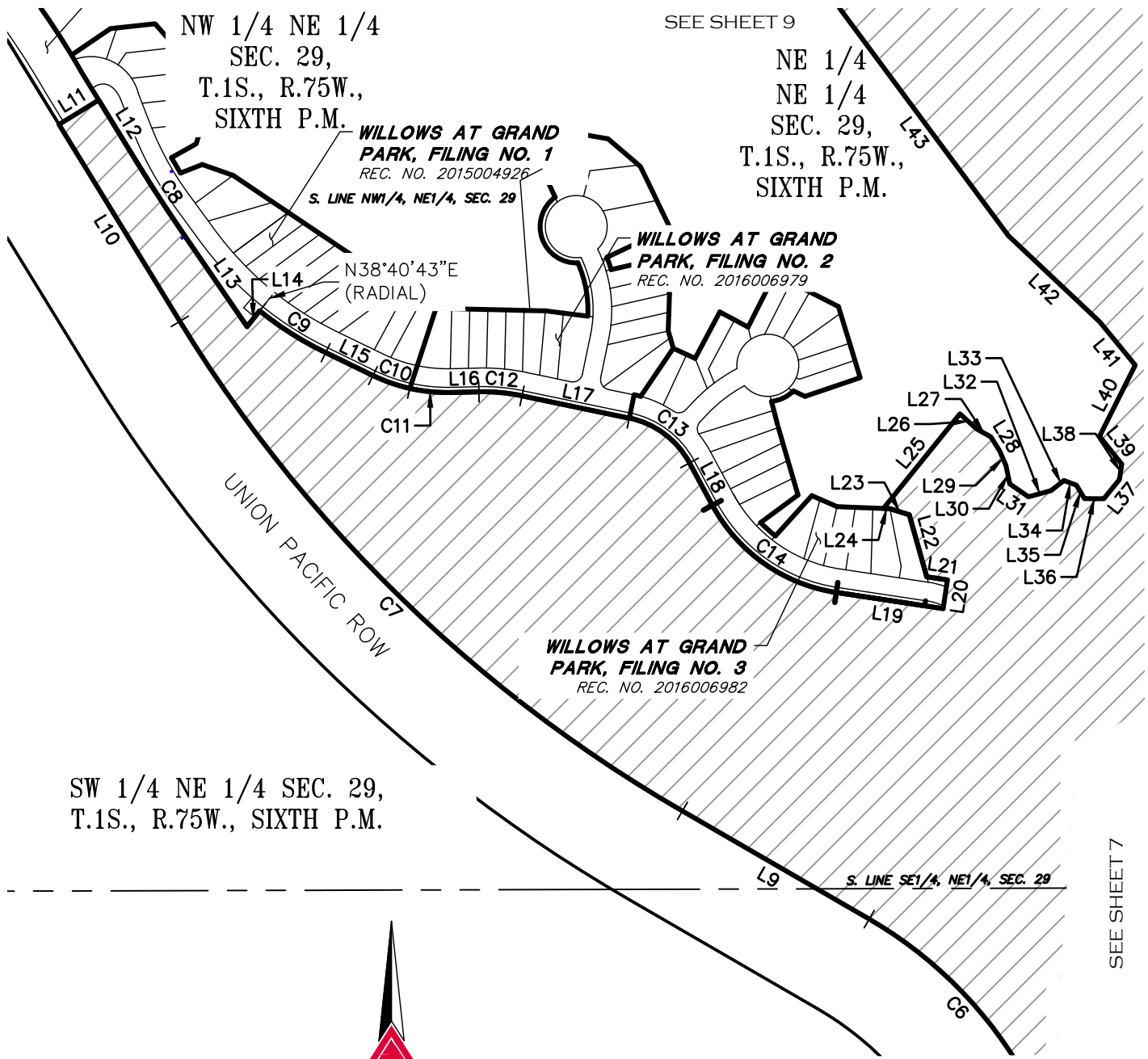


# ILLUSTRATION TO EXHIBIT A



# ILLUSTRATION TO EXHIBIT A



SEE SHEET 9

NE 1/4  
NE 1/4  
SEC. 29,  
T.1S., R.75W.,  
SIXTH P.M.

**WILLOWS AT GRAND  
PARK, FILING NO. 1**  
REC. NO. 2015004926

S. LINE NW 1/4, NE 1/4, SEC. 29

**WILLOWS AT GRAND  
PARK, FILING NO. 2**  
REC. NO. 2016006979

N38°40'43"E  
(RADIAL)

**WILLOWS AT GRAND  
PARK, FILING NO. 3**  
REC. NO. 2016006982

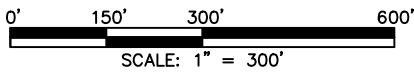
UNION PACIFIC ROW

SW 1/4 NE 1/4 SEC. 29,  
T.1S., R.75W., SIXTH P.M.

S. LINE SE 1/4, NE 1/4, SEC. 29

SEE SHEET 7

SEE SHEET 9 FOR CURVE TABLE  
SEE SHEET 10 FOR LINE TABLE



NOTE: THIS ILLUSTRATION DOES NOT  
REPRESENT A MONUMENTED LAND SURVEY  
AND IS ONLY INTENDED TO DEPICT THE  
ATTACHED LEGAL DESCRIPTION.

**AZTEC**  
CONSULTANTS, INC.

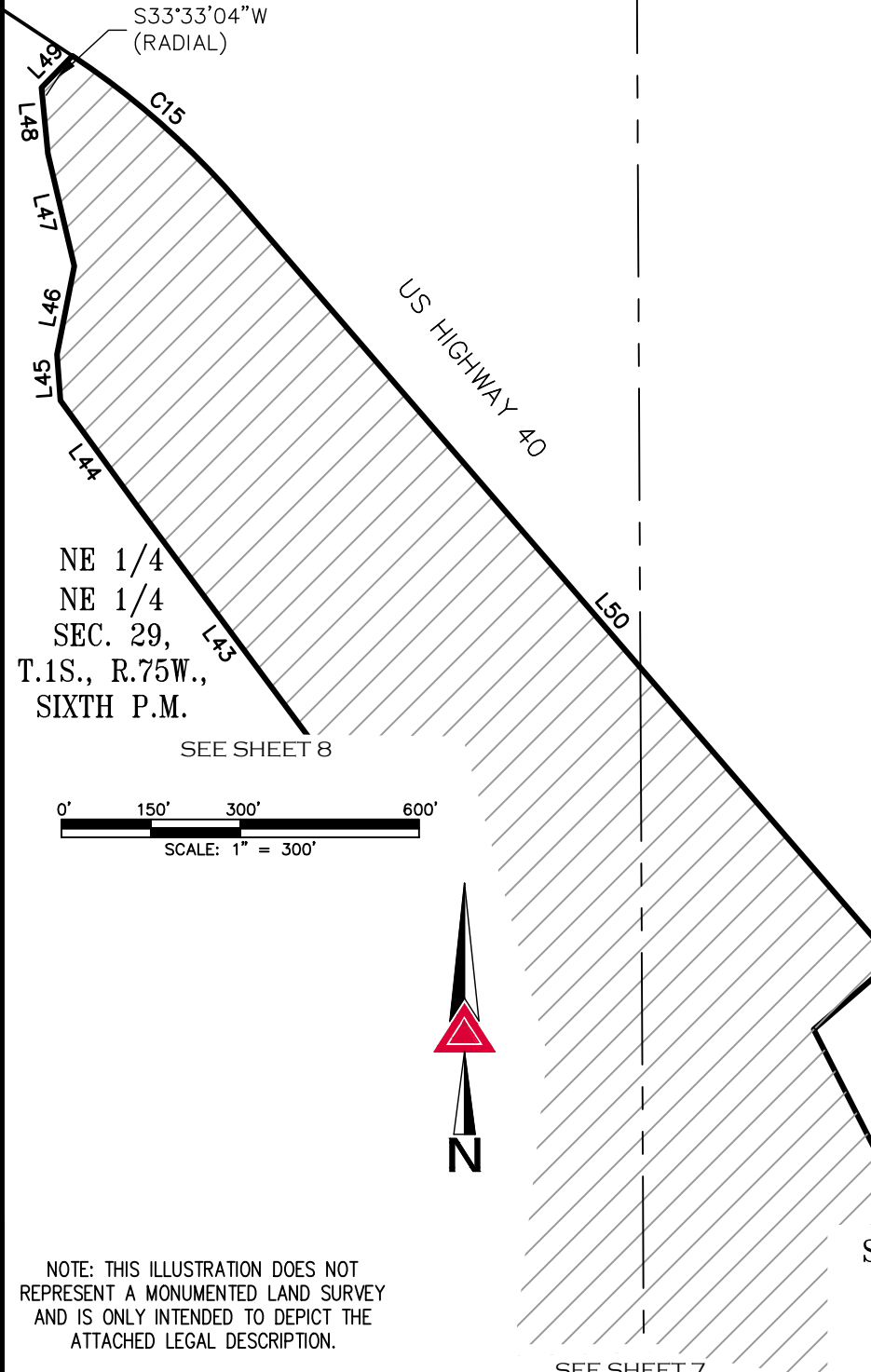
300 East Mineral Ave. Suite 1  
Littleton, Colorado 80122  
Phone: (303)713-1898  
Fax: (303)713-1897  
[www.aztecconsultants.com](http://www.aztecconsultants.com)

**GP SOUTH MEADOW METROPOLITAN DISTRICT**  
W 1/2, SEC 28 & E 1/2, SEC 29, T1S, R75W, 6TH P.M.  
COUNTY OF GRAND, STATE OF COLORADO

PATH: Q:\181122-01 - GRAND PARK - CONTROL\DWG\EXHIBITS\DISTRICT PARCELS\MEADOW&BYERS METRO DISTRICT.DWG  
JOB NUMBER: 181122-04      DATE: 2/23/2023      DWG: BOL      CHK: AKP      8 OF 10 SHEETS

# ILLUSTRATION TO EXHIBIT A

CURVE TABLE			
CURVE	DELTA	RADIUS	LENGTH
C1	18°01'13"	616.78'	193.99'
C2	6°42'27"	310.00'	36.29'
C3	30°46'41"	390.00'	209.50'
C4	17°18'02"	310.00'	93.61'
C5	19°32'27"	100.00'	34.11'
C6	34°23'25"	816.78'	490.25'
C7	28°24'46"	2764.93'	1371.12'
C8	2°53'42"	3464.00'	175.02'
C9	12°48'11"	678.00'	151.50'
C10	13°14'47"	328.00'	75.83'
C11	13°49'19"	328.00'	79.13'
C12	12°55'26"	372.00'	83.91'
C13	49°54'09"	172.00'	149.81'
C14	53°04'19"	328.00'	303.82'
C15	15°39'15"	1366.40'	373.32'
C16	22°49'32"	2798.79'	1114.99'
C17	30°07'57"	167.31'	87.99'
C18	9°34'18"	170.00'	28.40'
C19	26°15'28"	328.18'	150.40'
C20	71°49'08"	226.49'	283.90'
C21	16°18'47"	830.30'	236.40'



NOTE: THIS ILLUSTRATION DOES NOT REPRESENT A MONUMENTED LAND SURVEY AND IS ONLY INTENDED TO DEPICT THE ATTACHED LEGAL DESCRIPTION.

## ILLUSTRATION TO EXHIBIT A

LINE TABLE		
LINE	BEARING	LENGTH
L1	N00°17'02"W	315.00'
L2	S89°58'58"W	176.80'
L3	S02°20'02"E	145.30'
L4	S51°39'58"W	107.13'
L5	N35°17'27"E	91.62'
L6	N29°13'38"E	10.51'
L7	N00°17'02"W	320.44'
L8	S89°43'33"W	475.37'
L9	N59°57'08"W	417.58'
L10	N31°32'22"W	446.78'
L11	N58°24'50"E	90.13'
L12	S31°35'10"E	138.15'
L13	S34°28'52"E	210.64'
L14	N38°40'43"E	38.80'
L15	S64°07'28"E	101.58'
L16	N88°48'26"E	54.99'
L17	S78°16'07"E	211.95'
L18	S28°21'58"E	93.12'
L19	S81°26'17"E	208.87'
L20	N08°33'43"E	56.00'

LINE TABLE		
LINE	BEARING	LENGTH
L21	N81°26'17"W	40.44'
L22	N15°44'16"W	124.57'
L23	N72°40'16"W	39.43'
L24	N87°44'13"W	12.38'
L25	N38°57'07"E	235.49'
L26	S47°45'37"E	43.55'
L27	S61°11'08"E	31.40'
L28	S31°34'34"E	32.63'
L29	S23°26'37"E	30.42'
L30	S11°40'13"E	36.13'
L31	S55°08'04"E	43.98'
L32	N74°31'15"E	45.54'
L33	N51°43'53"E	31.60'
L34	S69°30'22"E	25.71'
L35	S30°37'22"E	30.39'
L36	S89°52'25"E	37.64'
L37	N39°06'03"E	47.77'
L38	N08°32'38"E	30.26'
L39	N38°46'42"W	68.65'
L40	N26°38'09"E	154.08'

LINE TABLE		
LINE	BEARING	LENGTH
L41	N39°20'37"W	108.05'
L42	N46°39'35"W	242.97'
L43	N36°34'21"W	534.45'
L44	N36°02'07"W	219.81'
L45	N04°15'38"W	77.57'
L46	N11°00'59"E	150.90'
L47	N13°10'50"W	193.67'
L48	N05°34'54"W	111.40'
L49	N44°04'36"E	74.48'
L50	S40°47'40"E	1958.86'
L51	S18°01'05"E	704.66'
L52	S74°17'43"W	188.93'
L53	S15°39'43"E	289.27'
L54	S18°59'21"E	27.08'
L55	S86°20'26"W	112.25'
L56	S89°01'44"W	129.25'
L57	S87°10'42"W	30.53'
L58	S87°10'41"W	95.38'
L59	S87°15'06"W	205.49'
L60	N00°11'09"W	44.03'